

Forbo Flooring Systems is part of the Forbo Group, a global leader in flooring, bonding and movement systems, and offers a full range of flooring products for both commercial and residential markets. High quality linoleum, vinyl, needle punch and hardwood floors combine functionality, colour and design, giving you total flooring solutions for any environment.



creating better environments

touch

duet
solo

Forbo
FLOORING SYSTEMS

LINOLEUM

Forbo
FLOORING SYSTEMS

creating better environments



Colour to feel

Touch... and feel the difference

With the use of ecologically sound materials architecture creates a distinctive image and atmosphere in the world we live. Touch is a totally new and innovative linoleum-based floor covering range, made from all natural, renewable raw materials. The range consists of two different types of surfaces that each deliver a wonderful tactile and natural experience: Touch duet and Touch solo.

Touch makes it easy to create inspiring natural environments that intrigue your senses. Environments that reflect current movements in art, fashion, architecture and interior design. Shiny and matt, rugged and smooth: a textured surface and range of colours that you sense as much as you see.

Colours you can touch

Light and color are elements that affect how we feel. With Touch, you create the interior mood of your choice: different yet sophisticated, cool yet warm, soft yet firm, neutral yet distinctive. In any and every space, light and shade combine with the textured surface of the floor to create a constantly changing 'floor-scape' that interacts with its surroundings and is unique to that environment.

Natural materials

Like our other linoleum products, Touch is made with natural linseed oil, rosin, wood flour, natural pigments, jute and limestone in a specialised manufacturing process. The secret of Touch duet and solo lies in the special characteristics that combine the hygienic and natural benefits of linoleum with the comforting and tactile qualities of cork.

Sunbeams reflecting on a stormy sea. The light and shade of slowly shifting sands. The muted contrast of a misty morning view. The rich golden tones at the end of the day.

See and feel light and texture in constantly-changing harmony. Sensations in colour that touch the soul by creating a better environment around you.



touch duet

Touch duet is characterized by a unique surface with a random pattern and a colour spectrum that changes according to the direction from which the floor is viewed. Despite its sophisticated finish, Touch duet is as tough as every other Marmoleum floor covering and is suitable for areas that see heavy use.

This makes Touch duet perfect for public buildings, care facilities, shops, practices and offices. It is ideal for meeting rooms and offices, leisure areas, lounges and other spaces in which you might consider carpet, linoleum or any other resilient floor covering, adding a touch of class to the environment. Being all-linoleum, homogeneous, from surface to backing, Touch is extremely wear-resistant. It is also protected with an advanced linoleum top-finish to ensure optimal performance in cleaning and maintenance.

The 12 colours of Touch duet are inspired by the greens, yellows, reds and browns that are found in the earthy environments of nature. This contemporary feel is strengthened by the matt and gloss effect.





3521 | Touch duet suede



3525 | Touch duet basalt

touch duet



3522 | desert



3521 | suede



3528 | coral



3527 | brick



3526 | peat



3520 | bark

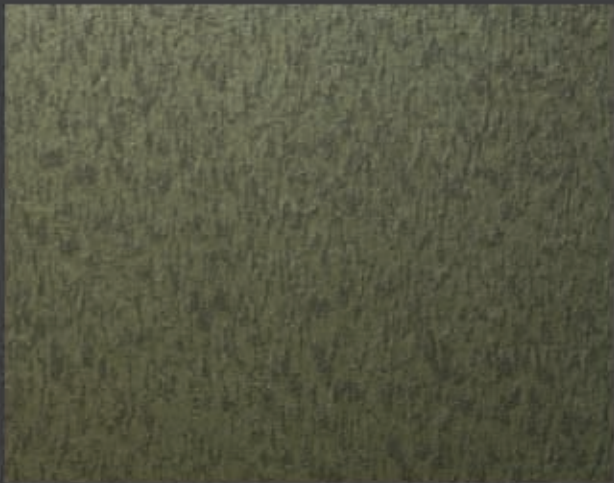
touch duet



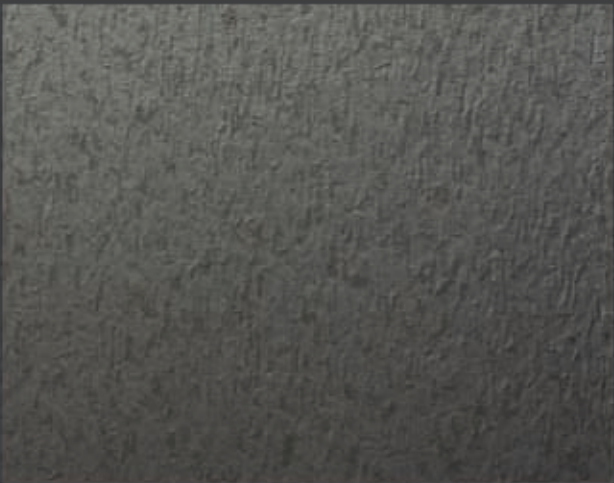
3529 | clay



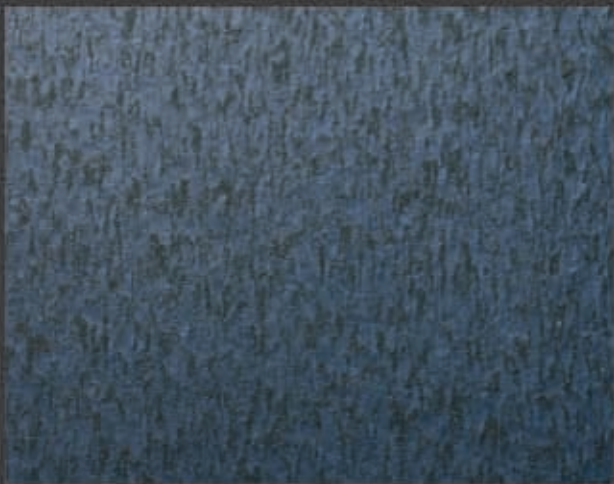
3523 | silica



3530 | moss



3524 | rock



3531 | teal



3525 | basalt

Matching welding rods are available in all collection colours.





touch solo

Touch solo is a matt, slightly textured surface with a warm and natural look and feel. It is especially designed for medium traffic areas where a comforting ambiance should be created. Its warm and comforting characteristics are optimally used in meeting rooms and offices, library areas, recreation rooms, waiting rooms, elderly homes, therapy and fitness areas. Touch solo is protected by a matt finish that preserves its specific surface and makes it easy to clean.

The 6 warm colours of Touch solo are based on the combination possibilities with Touch duet. In addition, any other Marmoleum colour can be combined to create an exclusive matt and gloss effect. This creates an experience of constantly-changing reflections in which the contrast between light and shade is continually changing the look of the floor in ever-so-subtle ways.



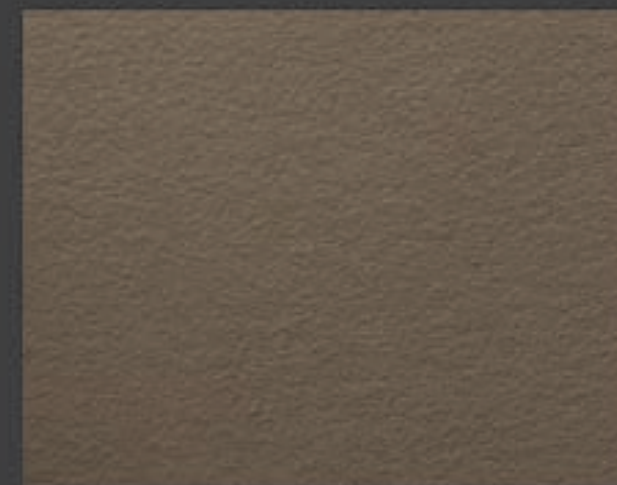


3544 | Touch solo elephant + 3523 | Touch duet silica

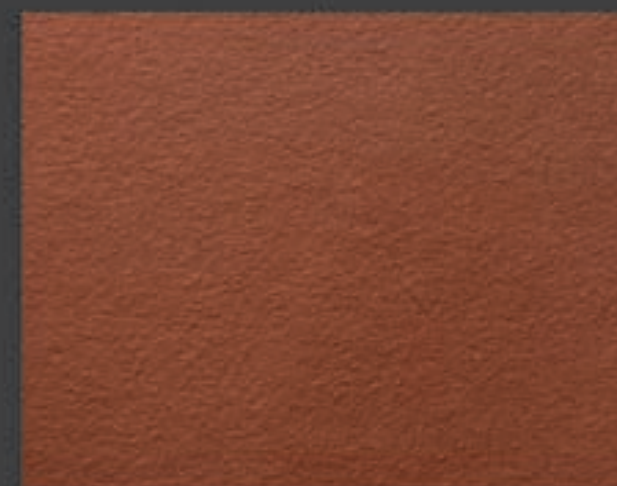
touch solo



3542 | reed



3540 | sepiá



3541 | sierra



3544 | elephant



3543 | earth



3545 | coal

Matching welding rods are available in all collection colours.



200 cm



2.5 mm

Forbo FloorCare Touch

Simple to care for

The Forbo linoleum collections are easy to clean and maintain with the Forbo FloorCare system.



Cleaning after installation

- Clean with neutral cleaner* and mop
- Pick up dirty water with wiper and mop or water vac
- Rinse with clean water and mop
- Pick up water with wiper and mop or water vac
- Depending on traffic intensity: apply a suitable polish or wax as initial treatment of the new floor**



Regular cleaning

- Wipe with dust mop, or vacuum the floor
- Remove spots with a damp mop



Periodic cleaning

- Spray clean with a rotary machine, a spray product* and a red or beige buffing pad at 300 rpm
- Use spray*, only where necessary



Occasional maintenance

- Scrub with water and neutral cleaner*, a rotary machine and a soft scrub brush pad at 180 rpm.
- Pick up dirty water with wiper and mop or water vac
- Rinse with clean water and mop
- Pick up water with wiper and mop or water vac
- Apply a suitable polish or wax **




* Forbo Cleaner (2.5 %) is an effective and pH neutral cleaner.

** Forbo Spray (1:1 diluted) will act both as a spray cleaner and as a protective, satin gloss polish/wax.

Your preferred supplier may inform you about comparable products. Detailed information is available in our Forbo FloorCare System brochure. Please contact your sales office or download from www.forbo-flooring.com

Technical specifications Touch

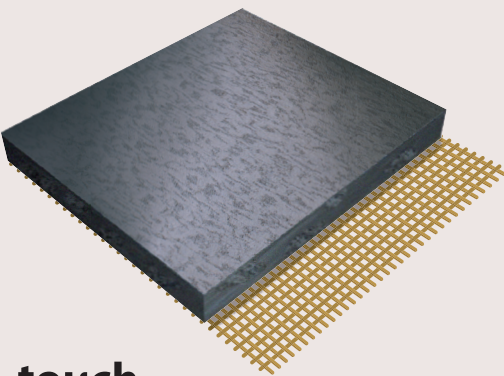
Touch meets the requirements of EN 548		duet	solo	
	Total thickness	EN 428	2.5 mm	2.5 mm
	Collection size		12	6
	Domestic heavy	EN 685	Class 23	Class 23
	Commercial heavy	EN 685	Class 33	Class 33
	Roll width	EN 426	2.00 m	2.00 m
	Roll length	EN 426	≤ 32 m	≤ 32 m
	Indentation-residual	EN 433	0.08 mm*	0.12 mm*
	Castor chair continuous use	EN 425	Suitable for office chairs with castors.	
	Light fastness	ISO 105-B02	Method 3: blue scale minimum 6.	
	Flexibility	EN 435	ø 20 mm	ø 25 mm
	Resistance to chemicals	EN 423	Resistant to diluted acids, oils, fats and to the conventional solvents such as alcohol, white spirit, etc. Not resistant to prolonged exposure to alkalis.	
	Slip resistance	DIN 51130	R10	R10
	Accoustical impact noise reduction	EN ISO 717-2	≥ 7 dB	≥ 10 dB
	Ambient sound	NF S 31-053	Lnew 72 dB	Lnew 69 dB
	Life Cycle Assessment		LCA is the foundation for securing the lowest environmental impact.	



EN 14041

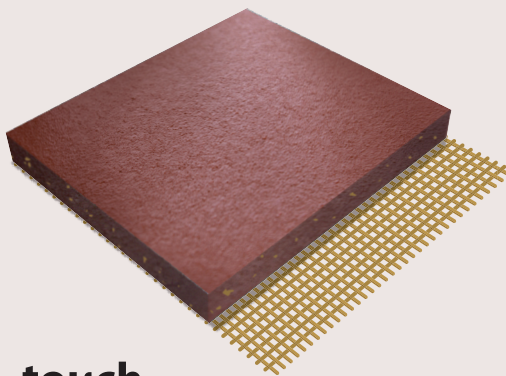
Touch meets the requirements of EN 14041			
	Reaction to fire	EN 13501-1	C _f , s1
	Slip resistance	EN 13893	DS: ≥ 0.30
	Body voltage	EN 1815	< 2 kV
	Thermal conductivity	EN 12667	0.012 W/m-K

* Typical value



touch duet

The structured, matt-gloss surface of Touch duet brings colours alive, with an appearance that subtly changes according to the direction and strength of the light and angle of view.



touch solo

Touch solo is a matt, slightly textured surface with a warm and natural look and feel that can perfectly be combined with the semi-gloss surface of Marmoleum.