

needlefelt

forte
markant
akzent

creating better environments

forbo
FLOORING SYSTEMS



96009

96019



Content

- 4 Quality you can rely on
- 6 **forte**
- 8 **markant**
- 9 **akzent**
- 10 **forte** graphic reef
- 12 **forte** graphic rice
- 14 **markant** graphic city
- 16 More textile collections
- 17 More Forbo Flooring
- 18 Forbo FloorCare
- 19 Technical specifications

Needlefelt from Forbo: quality you can rely on

The robust, hard-wearing properties of needlefelt make it ideal for installations that meet high traffic or in those areas where chairs with castors are likely to be in use, such as in offices, administrative premises and retail establishments. The textile look and typical range of colouring blend harmoniously and inadvertently into any interior-design scheme. Needlefelt carpet often provides a cost-efficient alternative to conventional broadloom carpeting in heavily-used areas that require a practical and durable textile-type floor covering. Forbo uses high quality polyamide fibres and a full latex impregnation for all its needlefelt carpets.

forte

is the premium product in our needlefelt range, offering the maximum feeling of comfort that comes with a fibre weight of approximately 750 g/m².

markant

is a high-quality, coarse-texture covering made of 100% polyamide fibres, equipped with all the characteristics required for hard-wearing performance in frequently-used places. Markant comes with a fibre weight of approximately 600 g/m².

akzent

is the value-for-money alternative and the only collection in the range that is made of a combination of 80% polyamide and 20% polypropylene fibres (fibre weight of 500 g/m²), which is nevertheless no lightweight when it comes to hard-wearing performance.

graphic

is created by a screen printing technique that is applied over the uni fibre ranges of Forte and Markant collections. It is available in three different versions: Forte provides the basis for our printed "Rice" and "Reef" designs, while Markant is the foundation of "City".

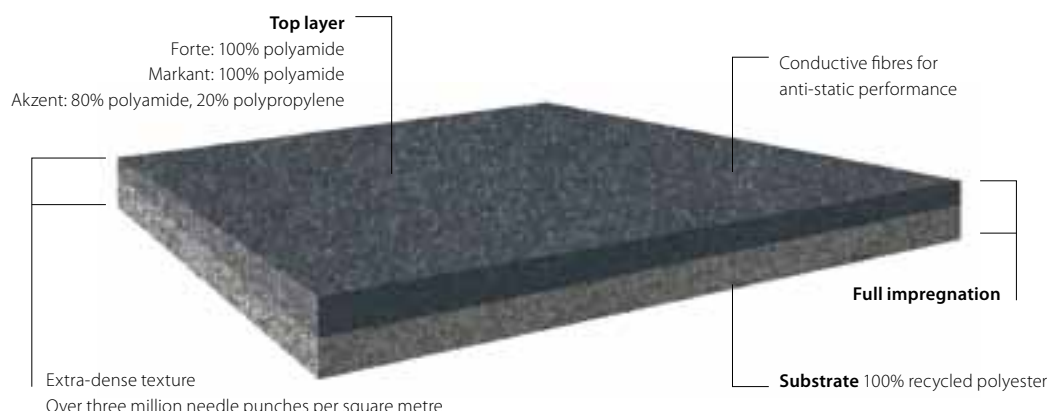


All Forbo needlefelt floor coverings fulfil the class-33 requirements relevant to their corresponding usage classification, and carry the GUT seal of approval issued by the German Carpet Research Institute for "contaminant-tested textile floor coverings".

The Forbo Flooring needlefelt collection is available in an attractive range of colours for the three quality levels of Forte, Markant and Akzent – further enhanced by three printed variants, including the latest addition, in the shape of our eye-catching “Reef” design. Our high quality stems from over 40 years’ experience in the manufacture and supply of high-end needlefelt flooring. Forbo works only with high-quality fibres designed to provide extra protection from dirt and soiling. This simplifies the task of day-to-day cleaning, while helping to maintain the right “cared-for” appearance.

All of our qualities offer the maximum, hard-wearing performance that comes with being classed as extremely robust (Class 33) in accordance with EN 1470. Measured pedestrian-noise levels of between 20dB and 22 dB mean reduced ambient noise, making needlefelt ideal for use in places, such as offices, which require a tranquil atmosphere and a minimum of noise distraction. And needlefelts are also ideal, much more so than conventional carpeting, for laying in places where castor chairs are used. Forbo needlefelts are also highly suitable for use in rooms with underfloor heating, thanks to their excellent heat-penetration properties.

They are available in three qualities designed to meet different requirements, with a wide range of modern printed designs and a total of 77 colour shades.



forte

With a total thickness of 6.5 mm, a 100% polyamide-fibre structure and a fibre weight of approx. 750 g/m², Forte is an impressive premium product. It is available in a range of 24 attractive colours. A very dense texture, with more than three million needle punches per square metre, guarantees a combination of attractive looks and hard-wearing performance for use in highly-frequented areas.



96003



96047



96037



96027



96017



96007



96013



96014



96003



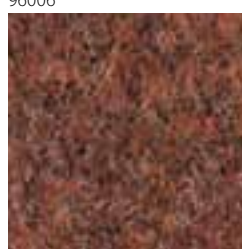
96004



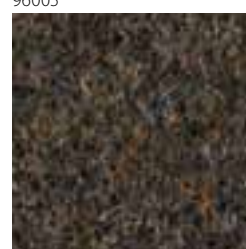
96006



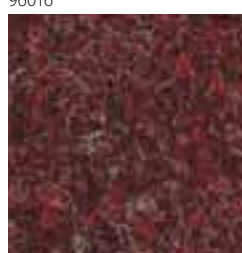
96005



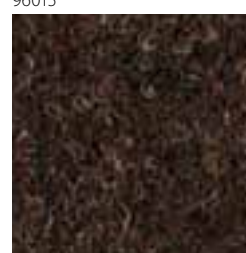
96016



96015



96026



96025



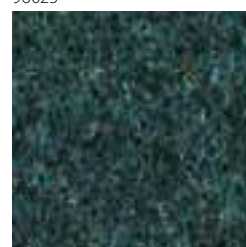
96012



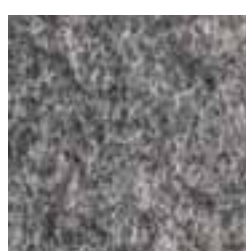
96008



96018



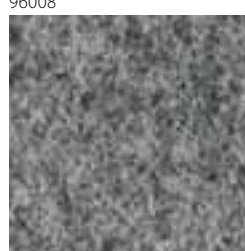
96028



96002



96001



96000



96009



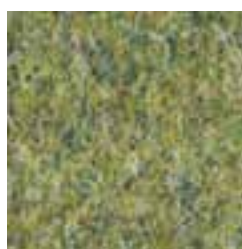
96019

markant

The high quality of Markant stems from the use of 100% polyamide fibres in its top layer, with a fibre weight of 600 g/m² and a total thickness of 5.5 mm. This coarse-textured needlefelt, which is available in 16 up-to-the-minute colours, fulfils all the relevant classification parameters of Class 33.



11117



11108



11118



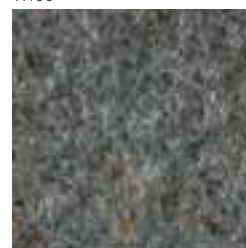
11116



11100



11126



11112



11103



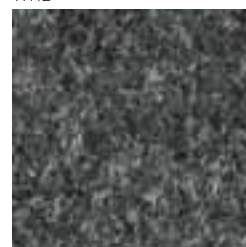
11113



11105



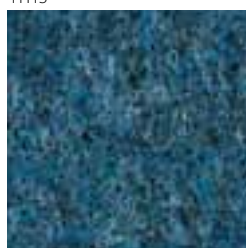
11115



11109



11107



11117



11127



11137



11119

akzent

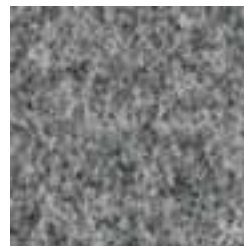
Akzent, which consists of 80% polyamide and 20% polypropylene, has a total thickness of 5.0 mm and a fibre weight of approx. 500 g/m². Available in 13 contemporary colours, it completes the Forbo needlefelt range. Its impact sound reduction of 20 dB has a highly-positive effect on room acoustics.



10718



10726



10700



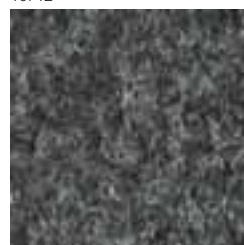
10703



10712



10713



10709



10714



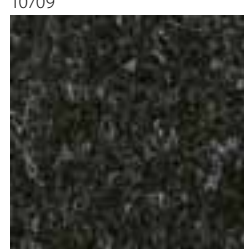
10707



10717



10737



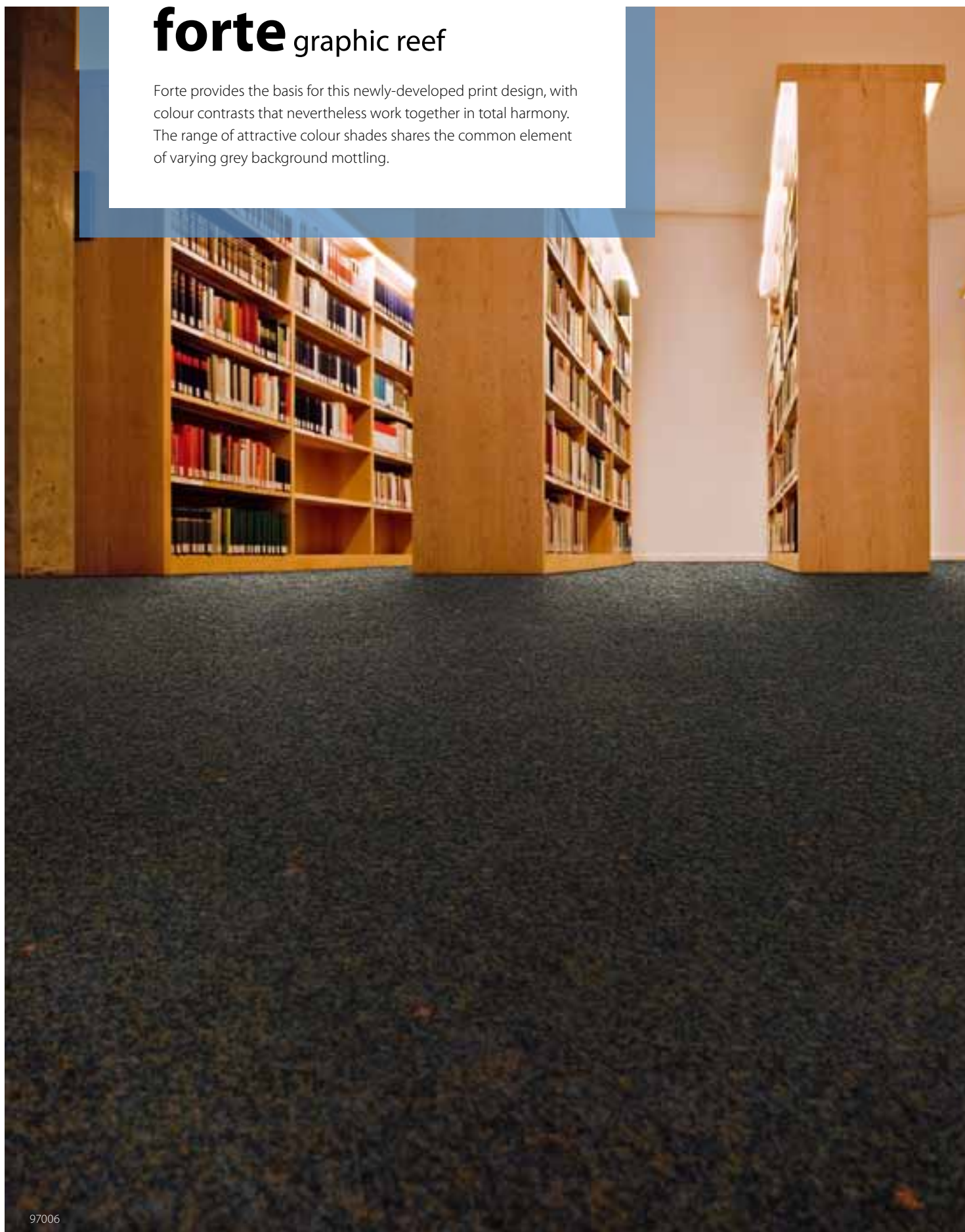
10719



10715

forte graphic reef

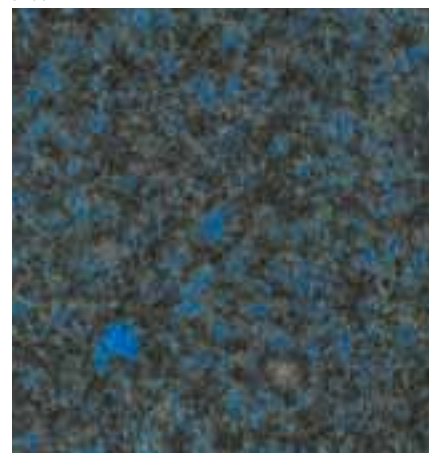
Forte provides the basis for this newly-developed print design, with colour contrasts that nevertheless work together in total harmony. The range of attractive colour shades shares the common element of varying grey background mottling.



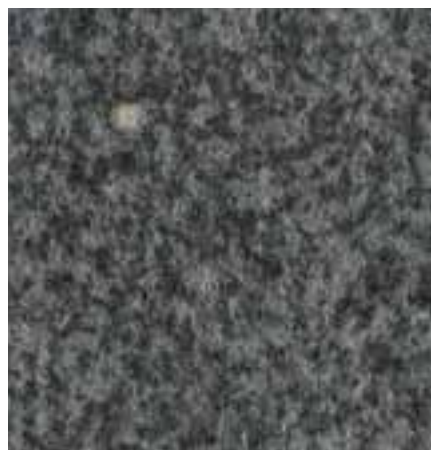
97006



97007



97011



97002



97012



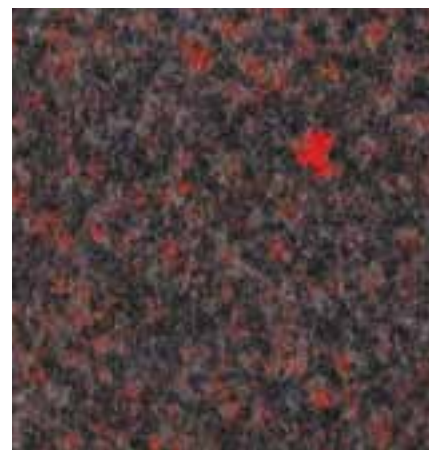
97001



97004



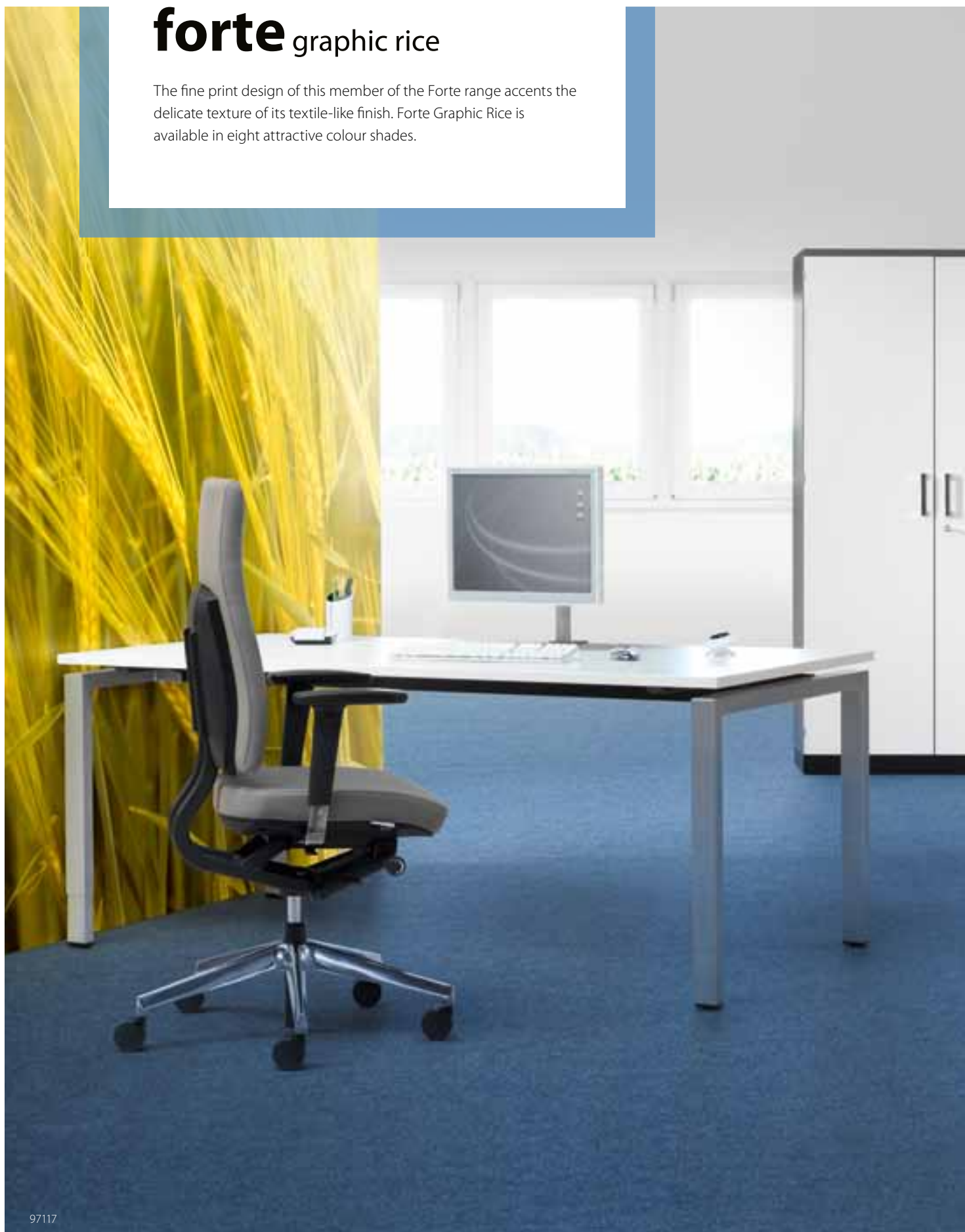
97006



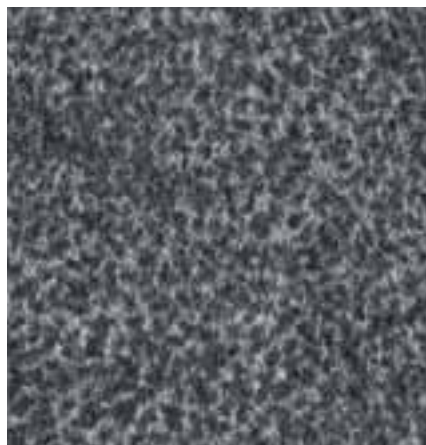
97016

forte graphic rice

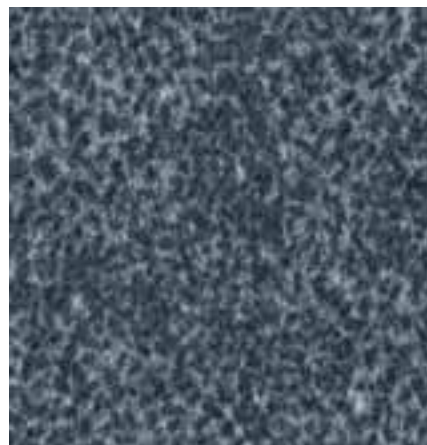
The fine print design of this member of the Forte range accents the delicate texture of its textile-like finish. Forte Graphic Rice is available in eight attractive colour shades.



97117



97112



97111



97106



97117



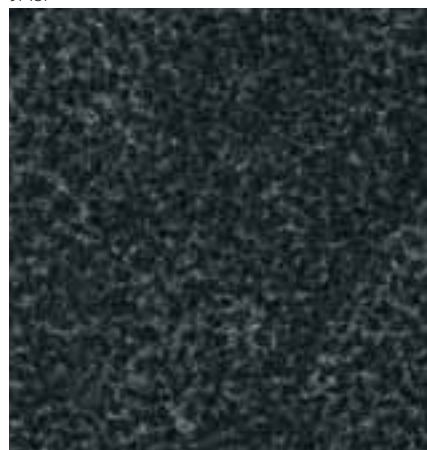
97116



97137



97105



97109

markant graphic city

This modern print design, with Markant as the basis, helps accentuate an interior designer's pure lines. The classical "box" pattern makes it especially suitable for use on large floor-areas. Eight shade-within-a-shade colour variants ensure compatibility with any modern room design.



11609



11616



11608



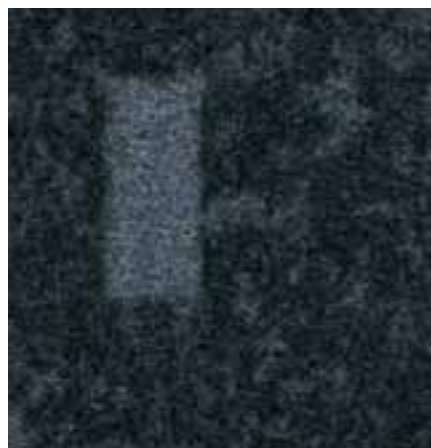
11606



11607



11605



11609



11619



11603

More Forbo textile collections

Tessera carpet tiles

With our Tessera carpet tiles we specialise in the design and manufacture of high quality tufted carpet tiles to meet the requirements of today's commercial interiors.

Westbond carpet tiles

Westbond carpet tiles are synonymous with total flexibility and sophistication. Blending yarns to order and manufacturing premium quality fusion bonded tiles in an almost infinite number of colourways, with no minimum order quantity.

Flotex flocked flooring

Flotex offers you a new dimension in flooring. Flotex is a completely unique flooring experience that combines all the hard wearing and durable characteristics of a resilient floor with the quality, warmth and comfort of a carpet.



More Forbo Flooring



Linoleum

As the world leader in linoleum, Forbo offers a huge range of natural linoleum floor coverings, plus surface linoleum for furniture and wall covering. More than 100 years of experience and the most environmentally friendly production techniques and products ensure the highest quality. Continual investment in product development ensures Forbo always offers the most innovative floor covering choices for project customers and consumers.



Project vinyl

Forbo project vinyl ranges are manufactured using the most advanced production techniques and stand out for their design and functionality. Our comprehensive portfolio spans general purpose, slip resistant, acoustic, static control, design vinyl tiles and wetroom solutions. With such a broad range combining performance and design it's always possible to meet both functional and aesthetical needs.



Entrance Flooring Systems

Every location has an entrance and besides being your first contact with the visitor, it also provides the first point of protection for the flooring inside. Forbo entrance flooring products look good while also helping extend the life of all your interior floors.

Forbo FloorCare method

Cleaning after installation



- Vacuum clean the floor using an upright vacuum cleaner with powered brush
- Remove stains or spills locally using clean warm water
- Remove excess water
- Allow the floor to dry

Regular cleaning



- Vacuuming
Regular vacuuming, using an upright vacuum cleaner with a powered brush, is the essential first step in the upkeep of the installation. Heavy traffic areas require more frequent vacuuming than those areas which are less frequented.

- Spot and stain removal
A daily spot and stain removal process should also be implemented using a neutral spotting detergent. The stain should not be allowed to dry as this can make removal more difficult.

Periodic maintenance














Vacuuming will not easily remove oily residues from needlefelt nor the balance of dry soiling. Systems have been developed to maintain appearance longer and remove some of the soiling. These systems allow needlefelt to be maintained on a periodic basis:

- Rotary shampoo: using rotating brushes and a crystallising shampoo.





Technical specifications

All Needlefelt products meet the requirements of EN 14041

			Forte / Forte Graphic	Markant / Markant Graphic	Akzent
	Total thickness	ISO 1765	ca. 6,5 mm	ca. 5,5 mm	ca. 5,0 mm
	Application	EN 1470	class 33	class 33	class 33
	Roll length		ca. 30 m	ca. 30 m	ca. 30 m
	Roll width		200 cm	200 cm	200 cm
	Fibre composition of the wear layer		100% PA	100% PA	80% PA / 20% PP
	Backing		100% recycled PES	100% recycled PES	100% recycled PES
	Construction		fully impregnated	fully impregnated	fully impregnated
	Fibre weight of the wear layer		ca. 750 g/m ²	ca. 600 g/m ²	ca. 500 g/m ²
	Total weight	ISO 8543	ca. 1,5 Kg/m ²	ca. 1,2 Kg/m ²	ca. 1,0 Kg/m ²
	Antistatic properties	ISO 10965	≤ 10 ⁷ Ω	≤ 10 ⁷ Ω	≤ 10 ⁷ Ω
	Impact sound reduction	ISO 140-8	22 dB	21 dB	20 dB
	Sound absorption	EN ISO 354	α _w = 0,20 (H)	α _w = 0,20 (H)	α _w = 0,20 (H)
	Suitability for castor chairs	EN 985	Yes	Yes	Yes
	Light fastness	ISO 105/B02	> 6	> 6	> 6
	Water fastness	ISO 105/E01	> 3-4	> 3-4	> 3-4
	Rubbing fastness wet	ISO 105-X12	> 3	> 3	> 3
	Rubbing fastness dry	ISO 105-X12	> 3-4	> 3-4	> 3-4

All Needlefelt products meet the requirements of EN 14041



	Reaction to fire	EN 13501-1	B _{f1} ≤1	B _{f1} ≤1	B _{f1} ≤1
	Slip resistance	EN 13893	DS ≥ 0.30	DS ≥ 0.30	DS ≥ 0.30
	Personal charging	ISO 6356	≤ 2 kV	≤ 2 kV	≤ 2 kV
	Heat transmission resistance	ISO 8302	0,07 m ² K/W	0,06 m ² K/W	0,05 m ² K/W



Forbo Flooring Systems is part of the Forbo Group, a global leader in flooring, bonding and movement systems, and offers a full range of flooring products for both commercial and residential markets. High quality linoleum, vinyl, textile, flocked and entrance flooring products combine functionality, colour and design, offering you total flooring solutions for any environment.



Baltic States

Forbo Flooring
K. Ulmana gatve 5
Riga, LV-1004, Latvia
Tel.: +371 670 66 116
Fax: +371 670 66 117
E-mail: info.lv@forbo.com
www.forbo-flooring.com

Poland

ul. Wolsztyńska 2
60-361 Poznań
Tel.: +48 (61) 862 13 82
Fax: +48 (61) 622 99 71
E-mail: info@forbo-flooring.pl
www.forbo-flooring.pl

Hungary, Romania, Bulgaria

Forbo Flooring B.V. Hungarian Sales
Representative Office
125 Erzsébet királyné útja
1142 Budapest
Tel.: +36 1 7858 073
Fax: +36 1 789 0636
info.hungary@forbo.com
www.forbo-flooring.hu

Czech & Slovak Republic

Forbo s.r.o.
Novodvorská 994
142 21 Praha 4 Česká republika
Tel.: + 420 239 043 011
Fax: + 420 239 043 012
E-mail: info@forbo.cz
www.forbo-flooring.cz

Serbia, Croatia, Bosnia and Herzegovina, Slovenia, Macedonia, Montenegro, Albania

Mobile: + 381 63 617 716
Email: boris.akerman@forbo.com

Other countries

Forbo Flooring B.V.
P.O. Box 13
1560 AA Krommenie
The Netherlands
Tel.: +31 75 647 74 77
Fax: +31 75 647 77 01
E-mail: contact@forbo.com
www.forbo-flooring.com

