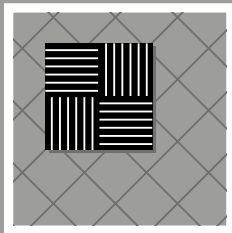




Saga²

unique concept in modular flooring

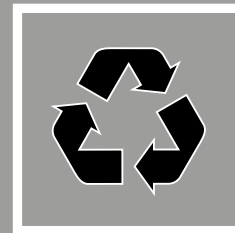


Overcomes irregular subfloors

Résiste aux défauts du support

Resistencia a los defectos de la solera

Bestand tegen hoge indrukkbelasting

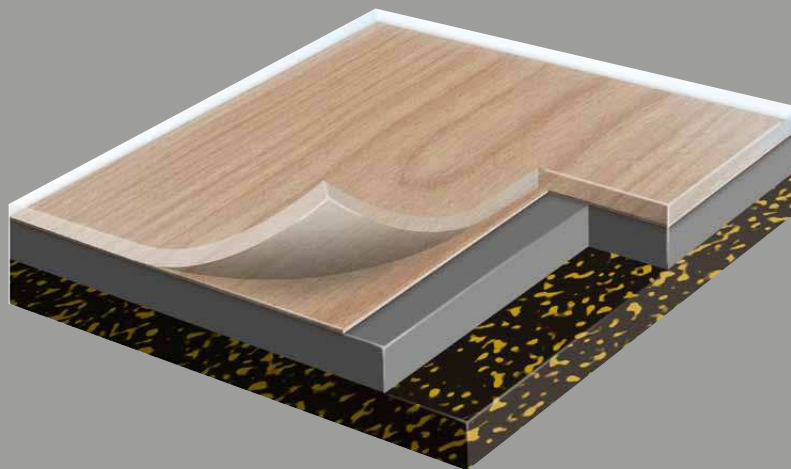


Vinyl & cork: 100% recyclable

Vinyle et liège : 100 % recyclable

Vinilo y corcho : 100% reciclable

Vinyl en kurk: 100% recyclebaar



Looselay tile

Dalle amovible

Loseta autoportante

Los te leggen tegel



Acoustic comfort

Confort acoustique

Insonorización acústica

Akoestisch comfort

Saga²

SAGA²

DESCRIPTION / DESCRIPTION / DESCRIPCIÓN

Total thickness / <i>Épaisseur totale</i> / Espesor total	EN 428	mm	4.60
	ASTM F386-02	inch	0.18
Thickness of wearlayer / <i>Épaisseur couche d'usure</i> / Espesor capa de uso	EN 429	mm	0.70
	ASTM F410-02	inch	0.03
Weight / <i>Poids</i> / Peso	EN 430	g/m ²	5595
Tile size / <i>Format des dalles</i> / Dimensiones de las losetas	EN 427	mm	500 x 500
	ASTM F 536	inch	19.685" x 19.685"
Number of tiles per package / <i>Nombre de dalles par boîte</i> / Cantidad de losetas/Caja	-	-	10


CLASSIFICATION / CLASSIFICATION / CLASIFICACIONES

Norm/Product specification / <i>Norme/Spécification produit</i> / Normas	-	-	EN 652
	ASTM F 1700-04	-	Class III Type B
European classification / <i>Classement européen</i> / Europea	EN 685	Class	34-42
Classement UPEC	-	-	U4P3E2C2
Avis technique	CSTB	n° A. T.	12/10-1581
<i>Sonorité à la marche</i>	NFS 31 074	dB	< 65
Fire rating / <i>Réaction au feu</i> / Fuego	EN 13 501-1	Class	Bfl-s1
	ASTM E648-08	Class	1
	CAN/ULC S102.2	-	-
Static electrical propensity / <i>Potentiel de charge</i> / Comportamiento electrostático	EN 1815	kV	< 2
Slip resistance wet: ramp test oil / <i>Glissance à l'humide</i> / Deslizamiento húmedo	DIN 51130 / BGR 181	Class	R10

PERFORMANCE / PERFORMANCE / CUALIDADES TÉCNICAS

Wear resistance / <i>Résistance à l'usure</i> / Abrasión	EN 660.2	mm ³	≤ 2.0
Wear group / <i>Groupe d'abrasion</i> / Grupo de abrasión	EN 651	-	T
Impact sound insulation / <i>Isolation acoustique bruits de chocs</i> / Acústica	EN ISO 717-2	dB	15
Dimensional stability / <i>Stabilité dimensionnelle</i> / Estabilidad dimensional	EN 434	%	≤ 0.15
Residual indentation / <i>Poinçonnement statique rémanent</i> / Punzonamiento	EN 433	mm	0.13
Castor chair test / <i>Essai de la chaise à roulettes</i> / Determinación del efecto de una silla con ruedas [Type W]	EN 425	-	OK
Thermal conductivity / <i>Conductivité thermique</i> / Resistencia térmica	EN 12524	W/(m.K)	0.25
Colour fastness / <i>Solidité lumière</i> / Resistencia a la luz	EN 20 105 - B02	degree	≥ 6
Chemical products resistance / <i>Résistance aux produits chimiques</i> / Resistencia a los productos químicos	EN 423	-	OK
Bacteriostatic & fungistatic treatment / <i>Fongistatique et bactériostatique</i> / Bacteriostático y fungistático	-	-	Sanosol®
Surface treatment / <i>Traitement de surface</i> / Tratamiento de superficie	-	-	Protecsol®
TVOC after 28 days / <i>TVOC [28 jours]</i> / TVOC (28 días)	ISO 16000-6	µg/m ³	< 100

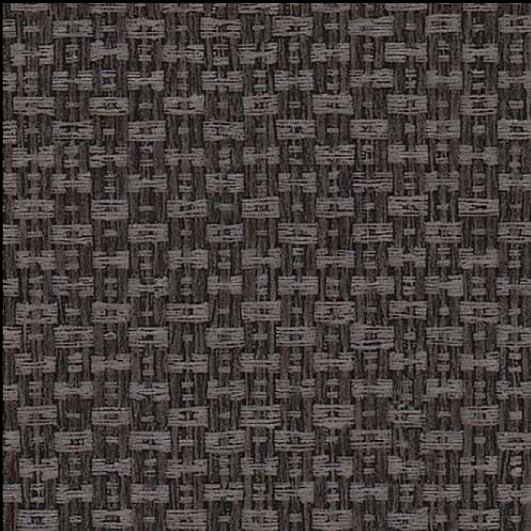
CE MARKING / MARQUAGE CE / MARCA DE CONFORMAD CE

CE	EN 14041	-	
----	----------	---	---

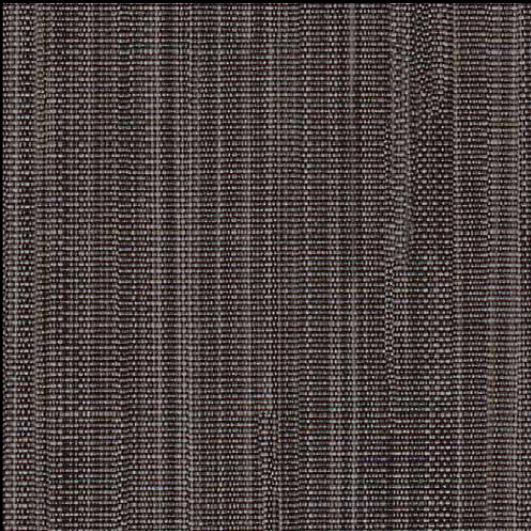


SAGA²

 500 x 500 mm	15 dB	Protocolsol®	Sanosol®	 100% recyclable
---	-------	--------------	----------	---



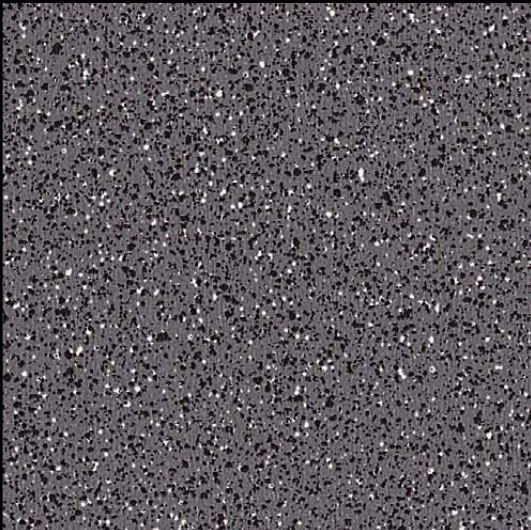
0017 Kadina City



0023 Barma Mystery



0010 Stripe Wood



0001 Diva Dark Grey



0011 Dark Oak

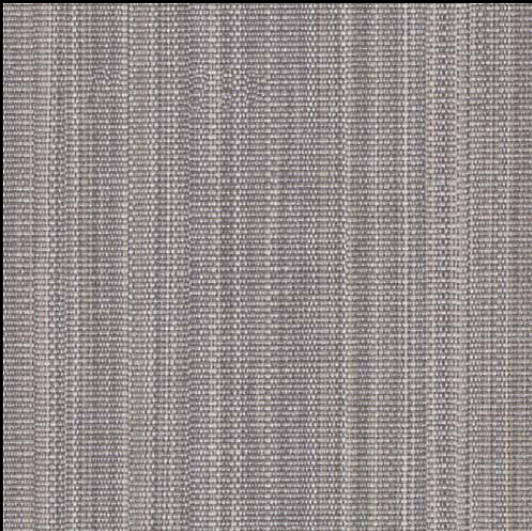


0012 Silver Oak

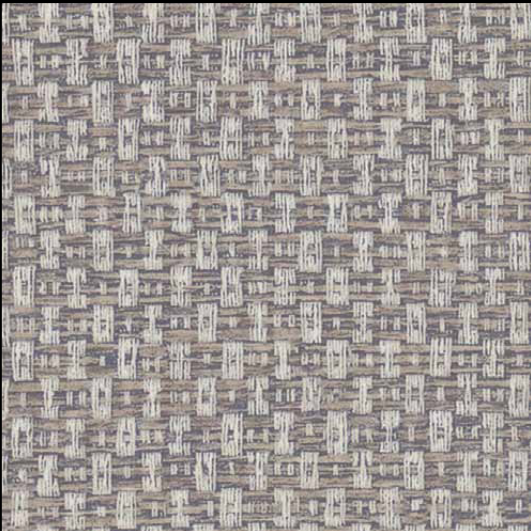
SAGA²



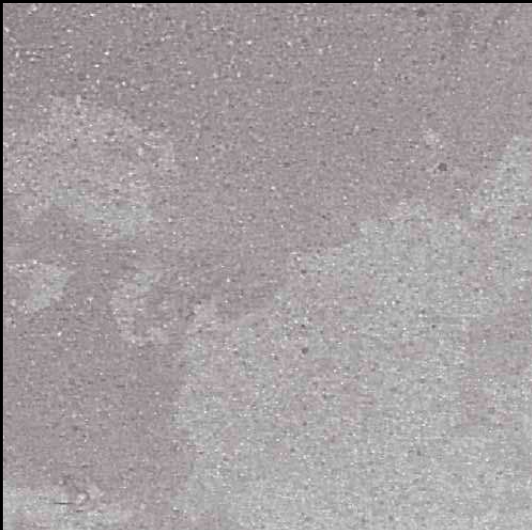
15 dB | Protecsol® | Sanosol® | 100% recyclable



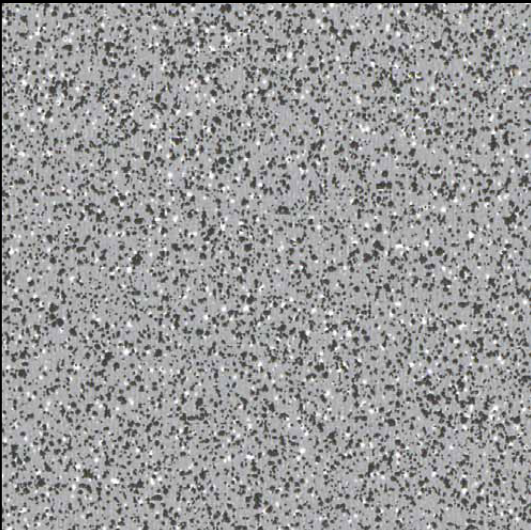
0021 Barma Sweet



0019 Kadina Ice*



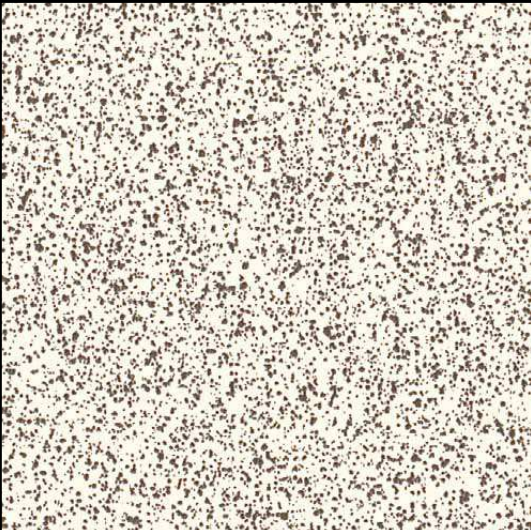
0015 Concrete



0002 Diva Grey



0014 Urban Stone

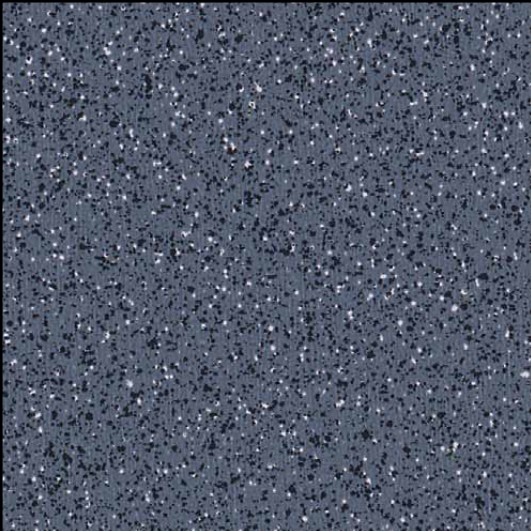


0004 Diva White

*Product availability: please contact us
*Nous consulter pour la disponibilité du produit

SAGA²

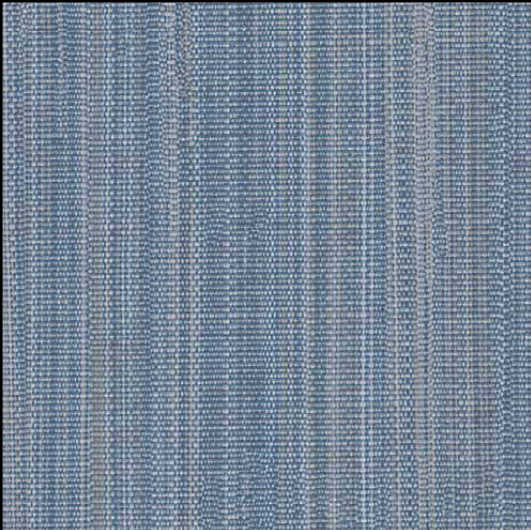
 500 x 500 mm	15 dB	Protecsol®	Sanosol®	 100% recyclable
---	-------	------------	----------	---



0003 Diva Blue



0007 Natural Beech



0020 Barma Lagoon

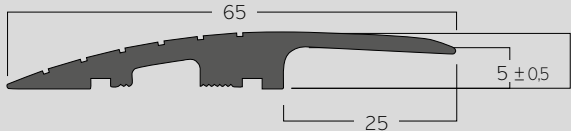



0006 Opalon Light




0013 Classic Stone

CONNECTING PROFILE / PROFIL DE LIAISON



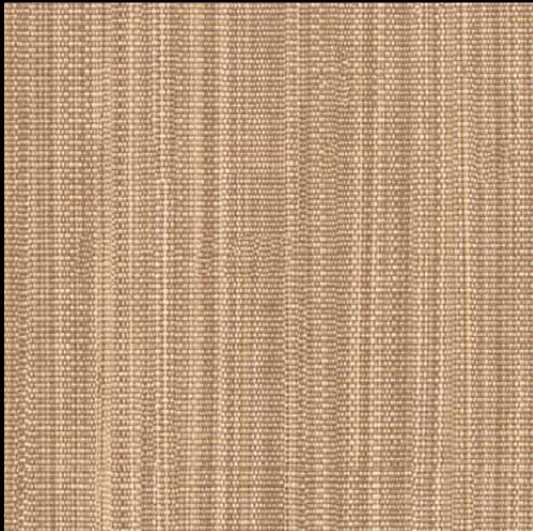
H205

SAGA²

 500 x 500 mm	15 dB	Protecsol®	Sanosol®	 100% recyclable
--	-------	------------	----------	---



0005 Opalon Medium



0024 Barma Pure



0008 Honey Beech



0022 Barma Cosy



0009 Nordica Beech



0018 Kadina Nature

ASIA: Gerflor Asia
Tel: +852 9222 6355 - Fax: +852 3006 1449
e-mail: gerflorasia@gerflor.com

AUSTRALIA/NEW ZEALAND: Gerflor Australasia Pty. Ltd
Australia Tel: 1 800 060 785 - New Zealand Tel: 0 800 630 119
e-mail: gerflor@gerflor.com.au

AUSTRIA/SWITZERLAND: Gerflor GmbH
Tel: +43 (0)7229/70800-0 - Fax: +43 (0)7229/70800-218
e-mail: austria@gerflor.com - switzerland@gerflor.com

BELGIUM/LUXEMBURG: Gerflor Benelux
Tel: +32 (0)3 766 42 82 - Fax: +32 (0)3 766 29 14
e-mail: gerflorbelgium@gerflor.com

CANADA: Gerflor International
Tel: +1 438 333 0752 - Fax: +1 438 380 5425
e-mail: gerflorcanada@gerflor.com

CHINA: Gerflor Floorings (China) Co. Ltd.
Tel: +86 21 6357 8818 - Fax: +86 21 6357 8998
e-mail: gerflorchina@gerflor.com

FINLAND : Gerflor Oy
Tel.: +358 (0) 10 617 5150 - Fax: +358 (0) 10 617 5152
e-mail: info@gerflor.fi

FRANCE: Gerflor - Service Express:

► N°Azur 0 810 569 569 ► N°Azur FAX 0 810 569 570

e-mail: contactfrance@gerflor.com

GERMANY: Gerflor Mipolam GmbH

Tel: +49 (0) 22 41-25 30-0

e-mail: GerflorMipolam@Gerflor.com

Kunden-Service: kundenservice@gerflor.com

Tel: +49 (0) 22 41-25 30-136 - Fax: +49 (0) 22 41-25 30-100

SAT Service und Anwendungstechnik: Technik@Gerflor.com

Tel: +49 (0) 22 41-25 30-555 - Fax: +49 (0) 22 41-25 30-550

IRELAND: Gerflor Ltd

Tel: +353 (0) 42 96 61431 - Fax: +353 (0) 42 96 61759

e-mail: gerflorirl@gerflor.com

ITALY: Gerflor S.p.A.

Tel +39 02 90 40 10 - Fax +39 02 90 42 74 84

e-mail: gerfloritalia@gerflor.com

LATIN AMERICA (Brazil): Gerflor América Latina

Tel: +55 11 38 48 20 20 - Fax: +55 11 38 48 20 23

e-mail: gerflor@gerflor.com.br

MIDDLE EAST: Gerflor Middle East

Tel: +966 3 847 1779 - Fax: +966 3 847 1781

e-mail: gerflorME@gerflor.com

NETHERLANDS: Gerflor BV

Tel: +31 (0)40 266 17 00 - Fax: +31 (0)40 257 46 89

e-mail: gerflorNL@gerflor.com

OTHER COUNTRIES: Gerflor International

Tel: +33 (0)4 74 05 40 00 - Fax: +33 (0)4 74 05 03 13

e-mail: gerflorcontract@gerflor.com

POLAND: Gerflor Polska Sp z o.o

Tel: + 48 61 823 34 01 - Fax: + 48 61 823 34 33

e-mail: info@gerflor.pl

PORTUGAL: Gerflor Iberia, SA

Tel: +351 21 843 95 49 - Fax: +351 21 846 55 44

e-mail: gerflorportugal@gerflor.com

RUSSIA: Gerflor zao

Tel / Fax: +7 495 785-23-71

e-mail: gerflorussia@gerflor.ru

SCANDINAVIA: Gerflor Scandinavia a.s.

Tel: + 47 64 95 60 70 - Fax: + 47 64 95 60 80

e-mail: gerflorscand@gerflor.no

SPAIN: Gerflor Iberia, SA

Tel: +34 91 653 50 11 - Fax: +34 91 653 25 85

e-mail: gerfloriberia@gerflor.com

UNITED KINGDOM: Gerflor Ltd

Tel: + 44 (0) 1926 622 600 - Fax: + 44 (0) 1926 401 647

e-mail: contractuk@gerflor.com

USA: Gerflor North America

Tel: 877 GERFLOR (437 3567) - Fax: 847 394 3753

e-mail: info@gerflorusa.com

gerflor.com

ARCHITECTURE
DECORATION
SPORT
TECHNOSPECIFIC



Committed to sustainable development

Gerflor Be CONNECTED!



www.gerflor.com

Gerflor
theflooringgroup